

HYROBOTICS ROBOT SAFETY ENCLOSURE CAGE (Heavy/Permanent)

READY TO INSTALL , HEAVY & ROBUST FRAME (Part No. : HY-60-60-72)



Robot Operation area can be fully covered



Picture for Closed Door



Sliding Door to minimize floor space



1 Frame has 1 Leg to Fix to Floor



Easy to assemble and disassemble

Safety Door Swivel Lock to confirm Door closed.



HY-60-60-72

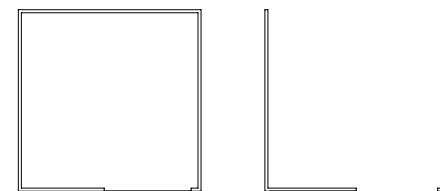
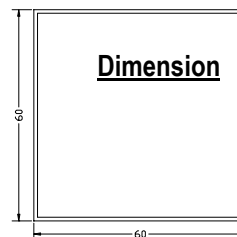
Part No. : HY-60-60-72

*** Specification**

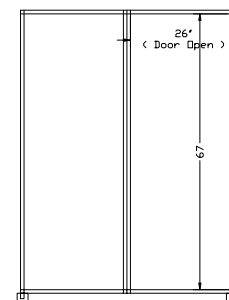
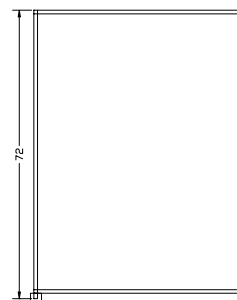
- Width : 60" x Length : 60" x Height : 72"
- Door Open : 26" Width x 67" Height (Sliding Door)
- 1.2" Rectangular Pipe and 0.165" Wire
- 3 of Authorized personnel only signs (15" x 6")
- Black Paint with Floor Anchor Fixed Legs
- Safety Latch circuit is not included

*** Features**

- Size for 250 ~ 800 Tons Robot(Might be required 2 for over 500 Ton)
- Door Open side can be used conveyor out or EOAT change Reach
- Back side frame can be detachable for conveyor out
- Easy to assemble and disassemble and customize size
- 0.165" wire can be cut to customized conveyor access



Layout can be changed in 30 Minutes



Parts List

1. Frame : 3 EA :59" Width x72" Height
2. Door Frame: 1 EA :59" Width x72" Height (Sliding Door)
3. Assembly Accessory
4. Safety Sign : 3 EA,
5. Floor Fixed Set : 4 Leg (4 Leg / Frame)

DISCOUNTED OFFER FOR HYROBOTICS TRAVERSE ROBOT PURCHASE (HIT, MACH, VECT, ZEST, NEXIA)

(\$ 1,250.00 / Set : FOB St.Louis)



HYROBOTICS CORP
5988 MID RIVERS MALL DR. ST.LOUIS MO 63304
TEL : 1-636-578-6059, Fax : 1-866-232-5594
WWW.HYROBOTS.COM , Email : Sales@hyrobots.com

All information is subject to change without any notice . All right reserved.