

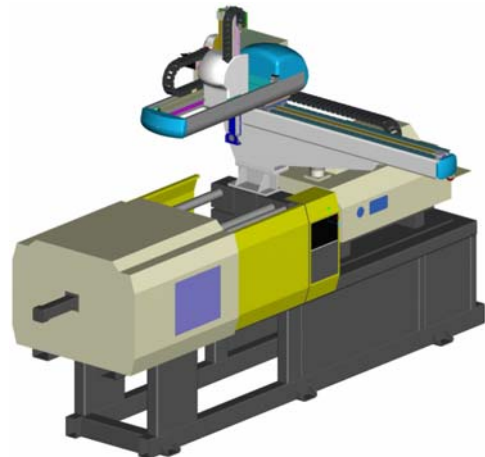
MAIN CONTROLLER FEATURES

HYNC-700 : 5.7 Inch Touch Screen Controller. (FOR NEXIA, ZEST, HYBRID ROBOT)



- HYNC-700 Provide easy and simplified motion control for sophisticated injection molding Robot Automation using color touch screen, servo Jog button, and play back step by step motion control. HYNC-700 control will allow easy plant automation and minimize your set up time and thus maximize your profit with HYRobotics Servo Robots

- ✓ Powerful hand held control pendant with full color touch screen.
- ✓ Developed specially for the molding industry by automation engineer with years of experience in the filed.
- ✓ Programming required no special skill or knowledge with 4 Basic Take out Step.
- ✓ Expandable up to 80 Step with Add position & Motion, User output and User input. (Easy)
- ✓ Mold take our Routine are made by teaching the robot via menu driven programming.
- ✓ Complex task like parts stacking, palletized insert loading and post process operation are easily accomplished by entering the basic data for the task.
- ✓ Input, output and logic circuits allow easy integration with other equipment.
- ✓ Adjustable speed controls in both auto (while robot is in operation) and manual mode.
- ✓ Minimal floor space required. Simultaneous and coordinated motion control for each Axis.
- ✓ Programmable sprue placement during outbound or return traverse motion. Programmable posture control at product extract side. Programmable fixed mold half or moving mold half product extraction.
- ✓ Languages: English, Spanish and Korean
- ✓ Conveyor or secondary equipment start signal.
- ✓ Defective product rejecting circuit.
- ✓ K Motion and J Motion is available.
- ✓ Movable Controller for Precision Adjustment in mold view.
- ✓ Rugged Plastics case with corner guard to protect touch screen and LCD from shock.



HYROBOTICS  **HYROBOTICS CORP**

5988 Mid Rivers Mall Dr. Saint Louis , MO 63304, USA

Tel : 1-636-578-6059 , Fax : 1-866-232-5594 , Homepage : www.hyrobots.com (DATE : 11/26/2008)

SIMPLIFIED WINDOWS BASED TOUCH SCREEN USER INTERFACE ROBOT CONTROL SYSTEM FOR INJECTION MOLDING AUTOMATION

◆ WHAT IS HYNC-700 ?

SIMPLIFIED WINDOWS BASED USER INTERFACE COLOR TOUCH SCREEN ROBOT CONTROLLER FOR PLASTICS INJECTION MOLDING AUTOMATION.



HYNC-700

◆ HYNC-700 DESCRIPTION

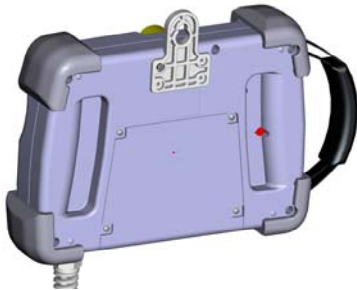
KNOW-HOW ACCUMULATED RESULT OF INJECTION MOLDING ROBOT AUTOMATION SINCE 1980. CUSTOMER(FIELD TECHNICIAN) ORIENTED EASY/TEACH ROBOT PROGRAMMING REALIZATION FOR INJECTION MOLDING AUTOMATION APPLICATION. SIMPLIFIED AND MULTI TASKING ROBOT CONTROLLER , VACUUM, CHUCKING, GRIPPING UNLOADING , INSERT MOLDING , PALLETIZING AND PALLETIZED INSERT LOADING. WINDOWS BASED COLOR GRAPHIC USER INTERFACE WITH TOUCH SCREEN.

◆ HYNC-700 APPERANCE

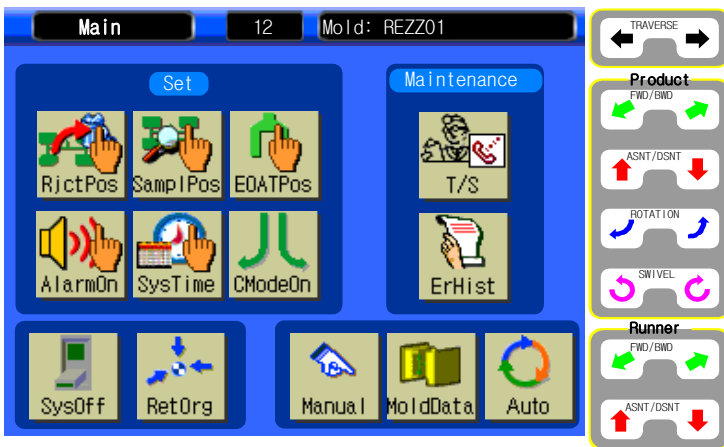
- HIGH STRENGTH RUGGED PLASTIC CASE
- CONER GUARD FOR SHOCK PROTECTION
- EASY SETUP FOR HAND MOVABLE TOUCH SCREEN
- MORE FLOOR SPACE WITH INSTALLED CONTROL HARDWARE ON ROBOT BODY.

◆ HYNC-700 SPECIALTY

- PLAY BACK ROBOT MOTION CONTROL MODE WITH BASIC 4 LOCATION (WAITING POSTION, TAKE OUT POSITION, UP POSITION, AND UNLOADING POSTION)
- EASY AND SIMPLIFIED ADDITIONAL POSITION AND MOTION BETWEEN STEPS
- MOLD MANAGEMENT PROGRAM HELP TO MINIMIZE MOLD SETUP TIME.
- ADJUSTABLE SPEED JOG BUTTON REALIZE EASY POSITION SETUP.
- SPEED, TIMER ADJUSTABLE IN AUTO MODE.
- INPUT / OUTPUT / INTERLOCK LED MORNITORING
- LINEAR CURVE ACCELERATION AND DECELERATION REALIZE FAST AND STABLE OPERATION
- PALLETIZING AND INSERT LOADING PROGRAM INCLUDE FOR EASY SETUP
- ROBOTIC INDUSTRY SAFETY CIRCUIT WITH SPI INTERFACE CIRCUIT INCLUDED

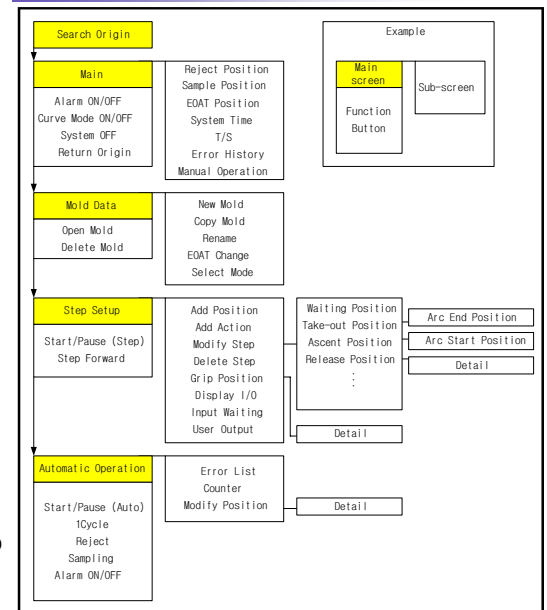


◆ PROGRAM STRUCTURE FLOW



◆ GENERAL DESCRIPTION

HYNC-700 REALIZED EASY AND SIMPLIFIED MOTION CONTROL FOR SOPHISTICATED INJECTION MOLDING ROBOT AUTOMATION AND PROVIDES COLOR TOUCH SCREEN ,SERVO JOG BUTTON, AND PLAY BACK STEP BY STEP MOTION CONTROL. FUNCTION AND RELIABILITY APPROVED BY NORTH AMERICA AUTOMOTIVE MOLDERS LIKE SUPPLIER FOR FORD, CHRYSLER AND HYUNDAI, KIA, SAMSUNG AND LG ELECTRONICS.



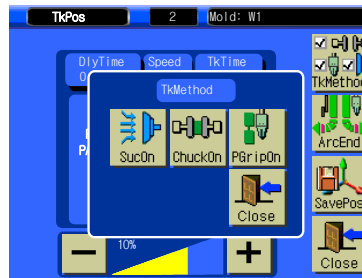
5988 Mid Rivers Mall Dr. Saint Louis , MO 63304, USA

Tel : 1-636-578-6059 , Fax : 1-866-232-5594 , Homepage : www.hyrobots.com (DATE : 11/26/2008)



◆ SERVO ORIGIN

INITIAL SCREEN FOR SEARCHING ORIGIN POINT FOR SERVO MOTOR. AS MOTION ORDER OF ASCENT, KICK, TRAVERSE. POSSIBLE TO KEEP THE ROBOT AWAY FROM CRASHING TO THE MOLD AND MACHINE WITH JOG BUTTON BEFORE SEARCHING ORIGIN.



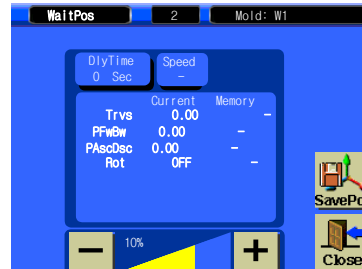
◆ TAKE OUT METHOD SCREEN

TAKE OUT METHOD CAN BE SELECTED BY SUCTION, CHUCKING, GRIPPING WITH SIMPLIFIED ICON. ALSO SPARE OUTPUT CAN BE SELECTED DURING ANY STEP.



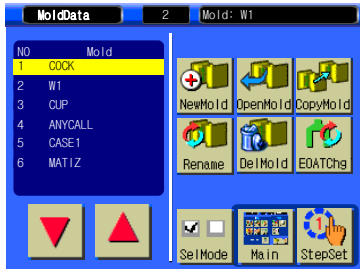
◆ MAIN SCREEN

EASY ROBOT MAINTENANCE , SETUP AND SAMPLE COLLECTION. MOLD MANAGEMENT AND SHOWING AUTO MODE FOR FORE WORKING JOB AFTER SEARCHING ORIGIN OF SERVO MOTOR. ERROR HISTROY LIST INCLUDED



◆ POSITION SELECTION

EOAT POSITION CAN BE SELECTED BY MEMBRANE JOG BUTTON WITH EASY SPEED ADJUSTMENT, ALSO ADDITIONAL POSITION CAN BE ADDED EASILY WITH *ADD POSITON. ICON.



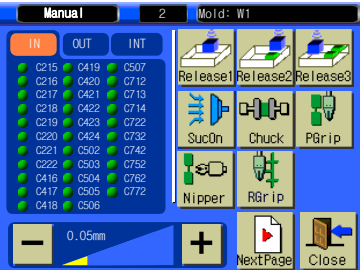
◆ MOLD MANAGEMENT

MOLD PROFRAMS CAN BE MADE , OPENED, SAVED, RESTORED, COPIED, EDITED EASILY. CONNECTED TO THE STEP SETTING MODE. MOLD PROGRAM CAN BE STORED UP TO 99 WITH STANDARD 20 STEP SIZE (1 MOLD PROGRAM CAN GO UP TO 80 STEPS)



◆ PALLETIZING SCREEN

FROM ONE CAVITY TO MULTI CAVITY PRODUCT CAN BE PALLETIZED FROM DEFAULT RELEASE POSTION WITH ADDING PITCH AND NUMBERS BY TRAVERSE, KICK, AND ASCENT LAYER AT THE MAIN AND SUB POSITION (RELEASE 2,3,4 NEED OPTIONAL RELEASE VALVE)



◆ MANUAL MODE

VACUUM, CHUCKING, GRIP, NIPPER CAN BE MANUALLY OPERATED . IN / OUT / INTERLOCK SIGNAL CAN BE MORNIOTED IN THE SCREEN. ON THE RIGHT SIDE, JOG MEMBRANE BUTTON MOVE THE ROBOT ARM TO THE REQUIRED POSTION.



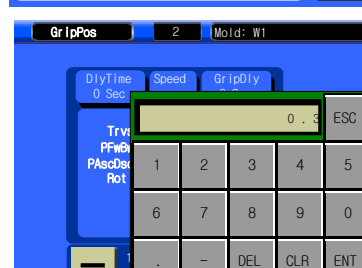
◆ INSERT GRIP POSITION

THIS SCREEN IS FOR MULTI CAVITY INSERT LOADING APPLICATION WITH TRAVERSE PITCH TO KICK PITCH STROKE. SPECIALY DESIGNED FOR PRE-INSERT MOLDING APPLICATION.



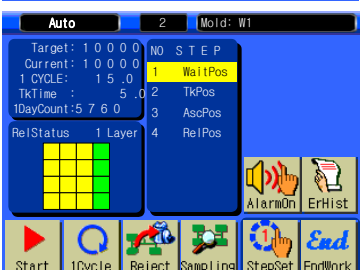
◆ STEP SCREEN

STEP SELECTION SCREEN CAN ADD EACH STEP POSITION, MOTION, EDIT WITH STANDARD 4 MAIN POSTION EASILY, SIMPLIFIED STEP BY STEP MOTION SYSTEM. STEP CAN BE ADDED WITH ADD POSITON AND MOTION UP TO 80 STEPS. JOG BUTTON STOP ROBOT BETWEEN SERVO POSITION.



◆ DELAY TIME INPUT

DELAY TIME CAN STABILIZE THE OPERATION OF EACH MOTION IN THE AUTO MODE



◆ AUTO SCREEN

TARGET CYCLE, CURRENT CYCLE AND UNLOADING PALLETIZING, INSERT LOADING PALLETIZING, MOTION SPEED AND DELAY TIME ADJUSTMENT, SAMPLING FOR INSPECTION. AND MORE FUNCTION



◆ MOLD & TEXT INPUT

EACH MOLD NAME CAN BE INPUT BY NUMBER AND ENGLISH TEXT FOR EACH MAINTENANCE.