



HYNC-700

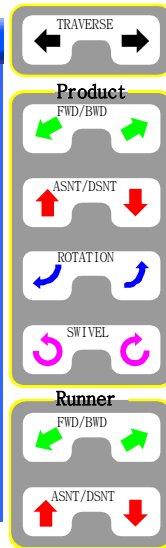
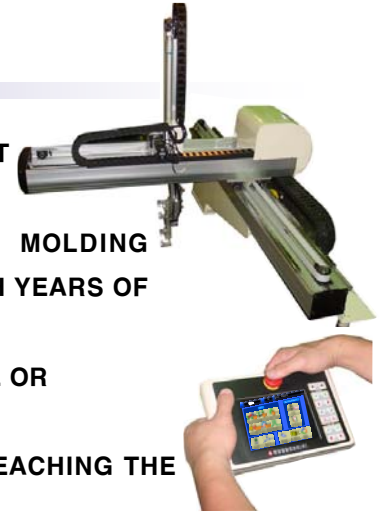
SIMPLIFIED WINDOWS BASED TOUCH SCREEN USER INTERFACE FOR INJECTION MOLDING AUTOMATION

◆ FEATURES

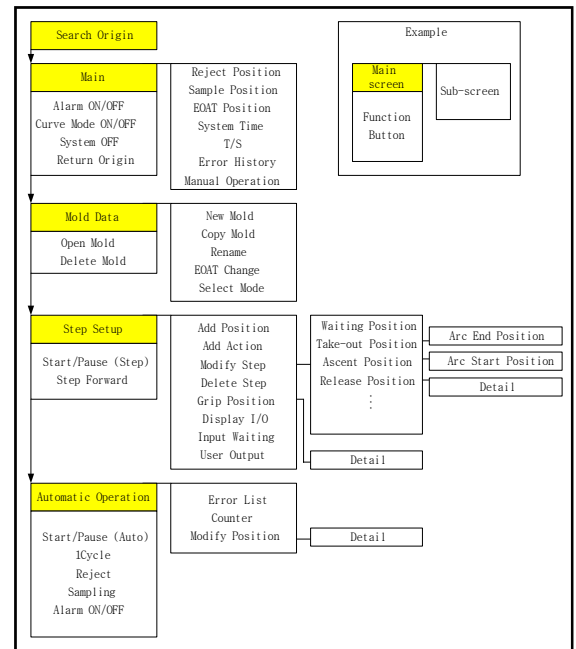


HYNC-700

- POWERFUL HAND HELD CONTROL PENDANT WITH FULL COLOR TOUCH SCREEN.
- DEVELOPED SPECIFICALLY FOR THE MOLDING INDUSTRY BY AUTOMATION ENGINEERS WITH YEARS OF EXPERIENCE IN THE FIELD.
- PROGRAMMING REQUIRES NO SPECIAL SKILL OR KNOWLEDGE.
- MOLD TAKE OUT ROUTINES ARE MADE BY TEACHING THE ROBOT VIA MENU DRIVEN PROGRAMMING.
- COMPLEX TASKS LIKE PART STACKING, PALLETIZED INSERT LOADING AND POST PROCESS OPERATIONS ARE EASILY ACCOMPLISHED BY ENTERING THE BASIC DATA FOR THE TASK.
- INPUT, OUTPUT AND LOGIC CIRCUITS ALLOW EASY INTERGRATION WITH OTHER EQUIPMENT.
- ADJUSTABLE SPEED CONTROLS IN BOTH AUTO AND MANUAL MODE.
- MINIMAL FLOOR SPACE REQUIRED, STAND FOR CONTROL PENDANT MAY BE REPLACED WITH BEAM MOUNTED SWITCHES AND HANGER .



◆ PROGRAM STRUCTURE

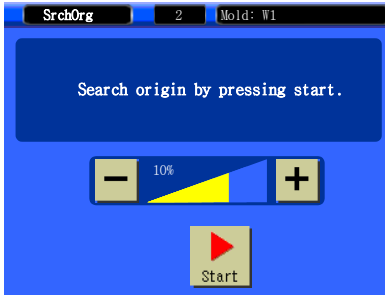


◆ GENERAL DESCRIPTION

- HYNC-700 PROVIDES EASY AND SIMPLIFIED MOTION CONTROL FOR SOPHITICATED INJECTION MOLDING ROBOT AUTOMATION USING COLOR TOUCH SCREEN ,SERVO JOG BUTTON, AND PLAY BACK STEP BY STEP MOTION CONTROL. NEW CONCEPT ROBOT CONTROL TECHNOLOGY WILL ALLOW EASY PLANT AUTOMATION AND MINIMIZE YOUR SETUP TIME AND THUS MAXIMIZE YOUR PROFIT.

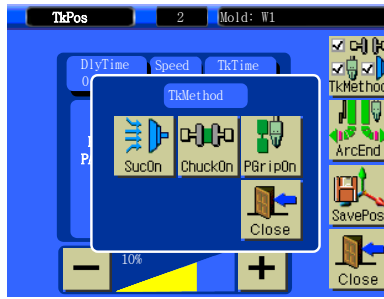


HYNC-700 MAIN SCREEN AND DESCRIPTION



◆ SERVO ORIGIN

INITIAL SCREEN FOR FINDING ORIGIN POINT OF SERVO MOTOR.



◆ TAKE OUT METHOD SCREEN

USING SIMPLE ICONS, THE TAKE OUT METHOD IS SELECTED.



◆ MAIN SCREEN

EASY ROBOT MANAGEMENT



◆ POSITION SELECTION

STEP POSITIONS ARE ENTERED BY TEACHING ROBOT, USING JOG BUTTONS.



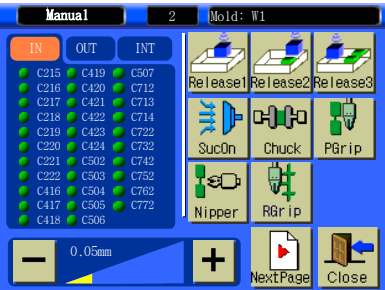
◆ MOLD MANAGEMENT

MOLD PROGRAMS CAN BE MADE, OPENED, SAVED, RESTORED, COPIED, EDITED EASILY



◆ PALLETIZING SCREEN

SETUP SCREEN FOR PALLETIZING AND STACKING OF PRODUCT



◆ MANUAL MODE

VACUUM, CHUCKING, GRIP, NIPPER CAN BE MANUALLY OPERATED. IN / OUT / INTERLOCK SIGNAL CAN BE MONITORED WITH THIS SCREEN. DETAIL ON EACH I/O AVAILABLE ON SUB SCREENS.



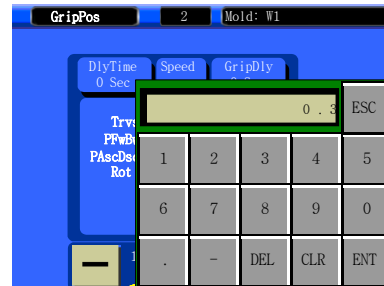
◆ INSERT GRIP POSITION

SETUP SCREEN FOR PALLETIZED INSERT LOADING



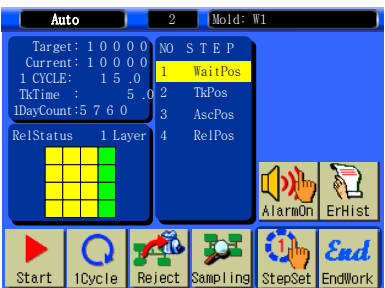
◆ STEP SCREEN

USED TO EDIT OR ADD STEPS TO THE CURRENT MOLD FILE.



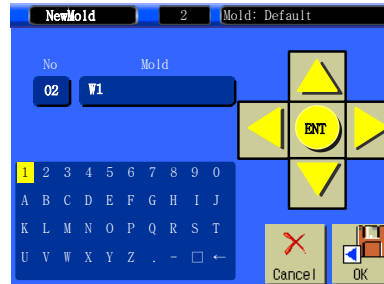
◆ DELAY TIME INPUT

TIMES ARE SET USING TOUCH SCREEN.



◆ AUTO SCREEN

TARGET COUNT, CURRENT COUNT, UNLOAD PALLETIZING, INSERT LOAD DE-PALLETIZING, MOTION SPEED, DELAY TIME ADJUSTMENT AND SAMPLING FOR INSPECTION.



◆ DATA INPUT SCREEN

ALPHA NUMERIC DATA IS ENTERED VIA TOUCH SCREEN.